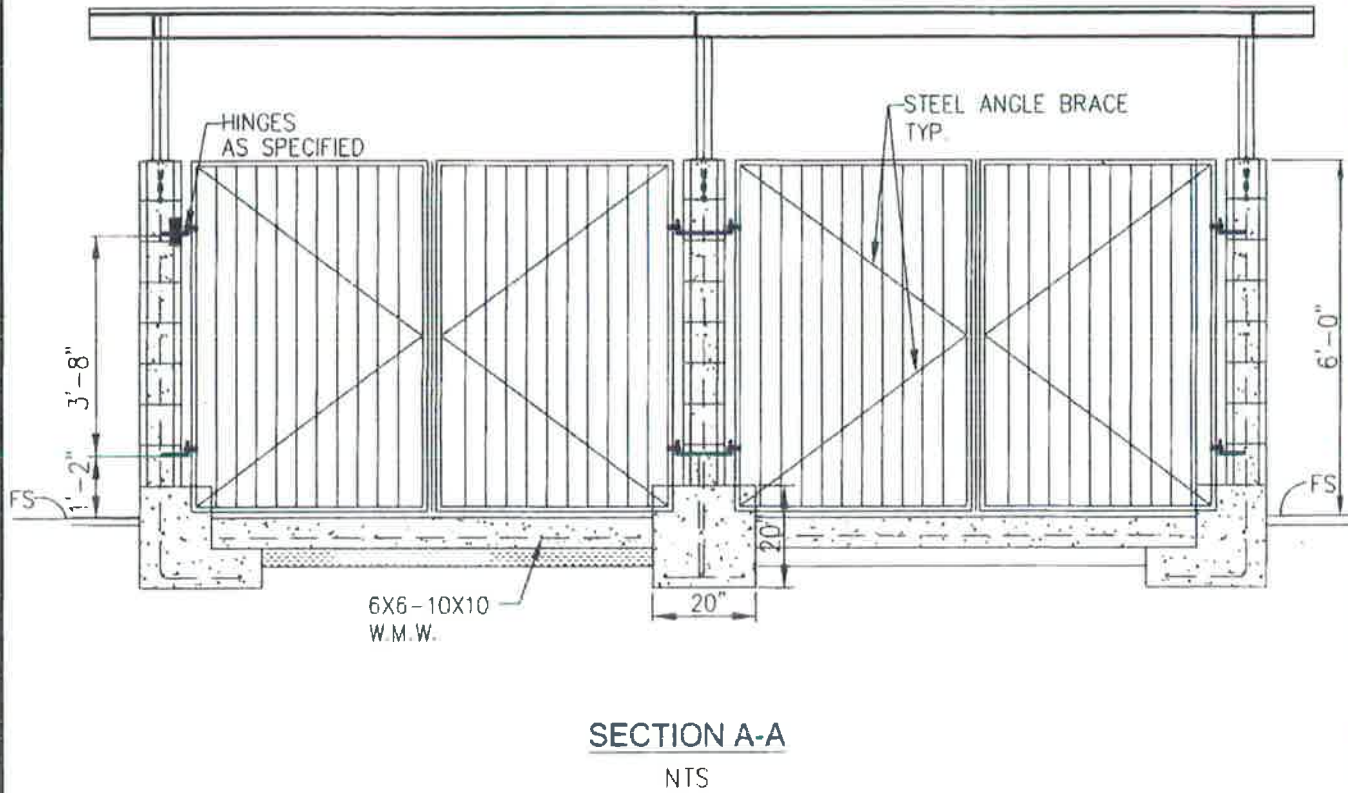
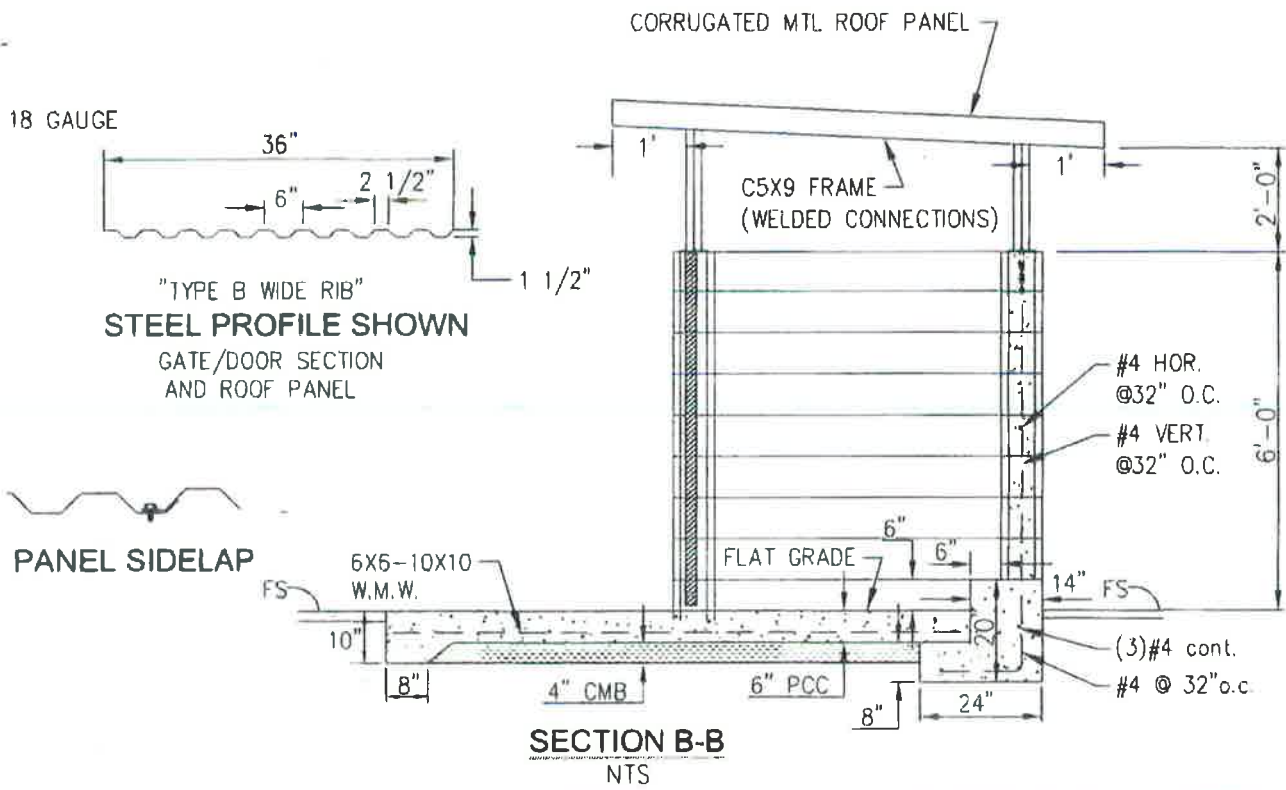
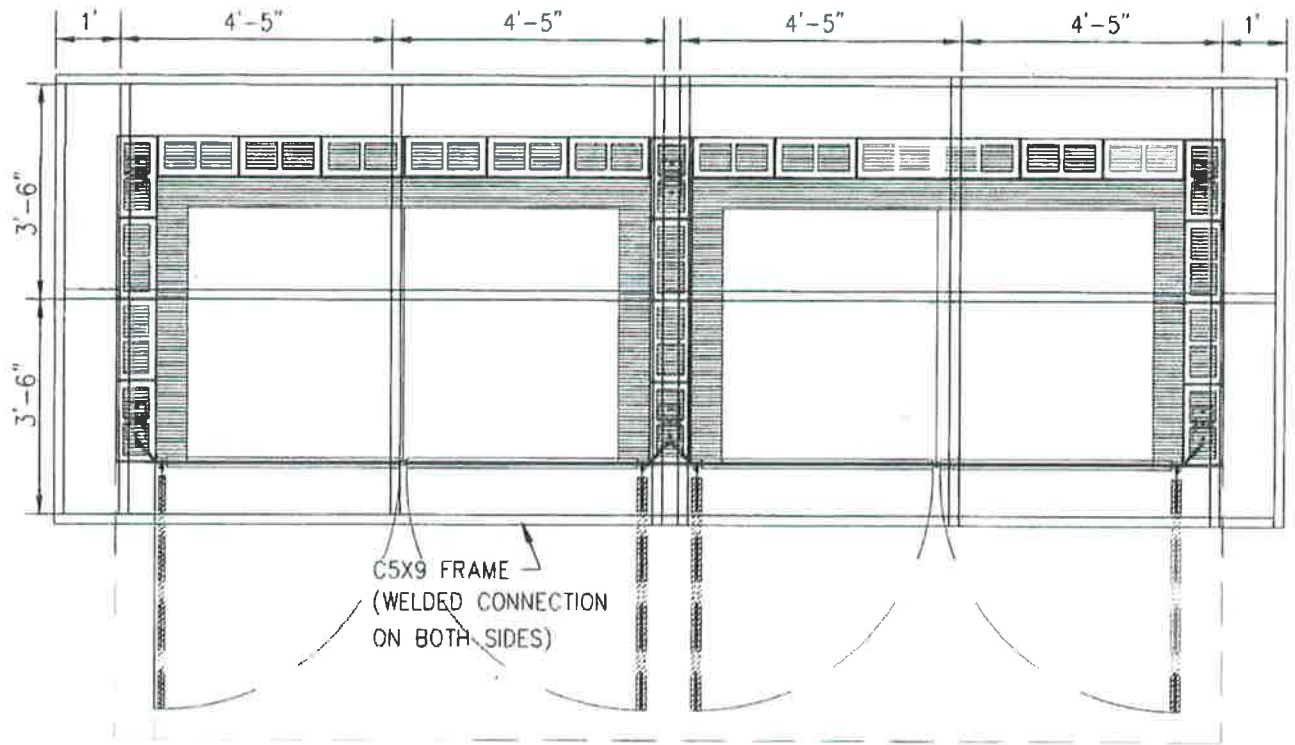


**Covered Refuse Enclosure  
Standard Plan**

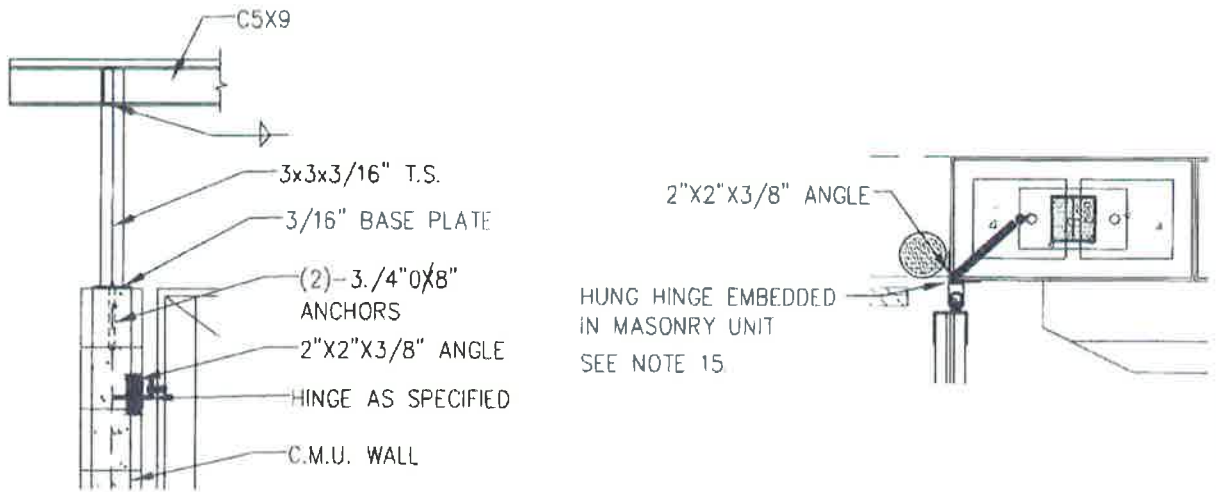
*[Signature]*  
Building Official

8/16/16  
Date





**ROOF FRAMING**  
NTS



## NOTES:

1. ALL EXTERIOR COLORS, MATERIALS AND FINISHES SHALL BE REVIEWED AND APPROVED BY THE PLANNING DEPARTMENT. THE TRASH ENCLOSURE SHALL BE PAINTED TO MATCH THE BUILDING WITH WEATHER RESISTANT PAINT. APPLY AN ANTI-GRAFFITI COATING.
2. WALLS SHALL BE 8X8X16 CMB BLOCK.
3. GATES SHALL REMAIN CLOSED AT ALL TIMES.
4. WALLS: WALLS TO BE CONSTRUCTED OF 8X4X16 CONCRETE MASONRY UNITS WITH ALL CELLS GROUTED.  
MASONRY:  $f_m=1500\text{psi}$ .  
REBAR:  $f_s=24,000\text{psi}$ .  
CONCRETE:  $f'_c=2000\text{psi}$ .  
MORTAR... 1:0.05:4.5 PORTLAND CEMENT:LIME SAND RATIO  
GROUT... 1:3:2 PORTLAND CEMENT:SAND:PEA GRAVEL RATIO
5. ALL CONCRETE SHALL BE POURED IN ACCORDANCE WITH SSPWC SECTION 300-3.3
6. PROVIDE FULL MORTAR BED AT THE BOTTOM OF THE FIRST COURSE.
7. HORIZONTAL JOINTS SHALL BE TOOLED CONCAVE OR WEATHERED. VERTICAL JOINTS SHALL BE TOOLED CONCAVE OR RAKED.
8. REINFORCING STEEL SHALL BE GRADE 300 (GRADE 40), AND LAPPED A MINIMUM 40 BAR DIA.
9. SPECIAL INSPECTION IS NOT REQUIRED.
10. CONCRETE FOUNDATION AND SLAB: ALL CONCRETE SHALL BE 520-C-2500 AND SHALL BE PER THE STANDARD SPECIFICATIONS FOR PUBLIC WORKS CONSTRUCTION.
11. ACCESS DOORS: SHALL BE 3' WIDE, STEEL FRAME W/ STEEL ANGLE BRACE TYPE METAL 18 GAUGE AND STEEL MINI V-BEAM PANEL AND IT SHALL BE HUNG ON BLOCK. HINGES SHALL BE AS SPECIFIED.
12. LOCATION: THE LOCATION OF TRASH ENCLOSURE SHALL BE APPROVED BY THE CITY.
13. ACCESSIBILITY: ENCLOSURE SHALL NOT BE LOCATED BEHIND A LOCKED ENTRY OR GATE. THE CLOSURE OPENING MAY NOT BE BLOCKED BY PARKING OR LOADING SPACES.
14. FIRE REQUIREMENTS: ENCLOSURE SHALL NOT BE PLACED WITHIN FIVE (5) FEET OF COMBUSTIBLE WALLS, OPENING, OR ROOF EAVES UNLESS PROTECTED BY A CITY OF SANTA PAULA FIRE DEPARTMENT APPROVED AUTOMATIC SPRINKLER SYSTEM.
15. GATES SHALL NOT OPEN INTO DRIVING LANES OR PARKNG SPACES.
16. ROOF MATERIAL SPECIFICATIONS:  
ALUMINUM: ALLOY 3004 IN COMPLIANCE WITH THE ALUMINUM ASSOCIATION COMPOSITION SPECIFICATIONS AND CONFORMING TO ASTM B209-96.  
STEEL: GRADE A STRUCTURAL QUALITY CONFORMING TO ASTM A653, GALVANIZED TO ASTM A924, G90 CLASS IS STANDARD.
17. INSTALLATION AND FASTENING GUIDELINES:  
RECOMMENDED ROOF SLOPE =  $1/2"$  PER FOOT  
MINIMUM END LAPS:  
SIDING = 4"  
ROOFING = 9"  
REQUIRES SEALANT AT SIDE AND END LAPS  
FASTENING TO PATTERNS FOR 20PSF LOADING:  
PANEL FIELD: 8" o.c.  
PANEL END LAPS: 8" o.c.  
PANEL SIDELAPS: 16" o.c.

